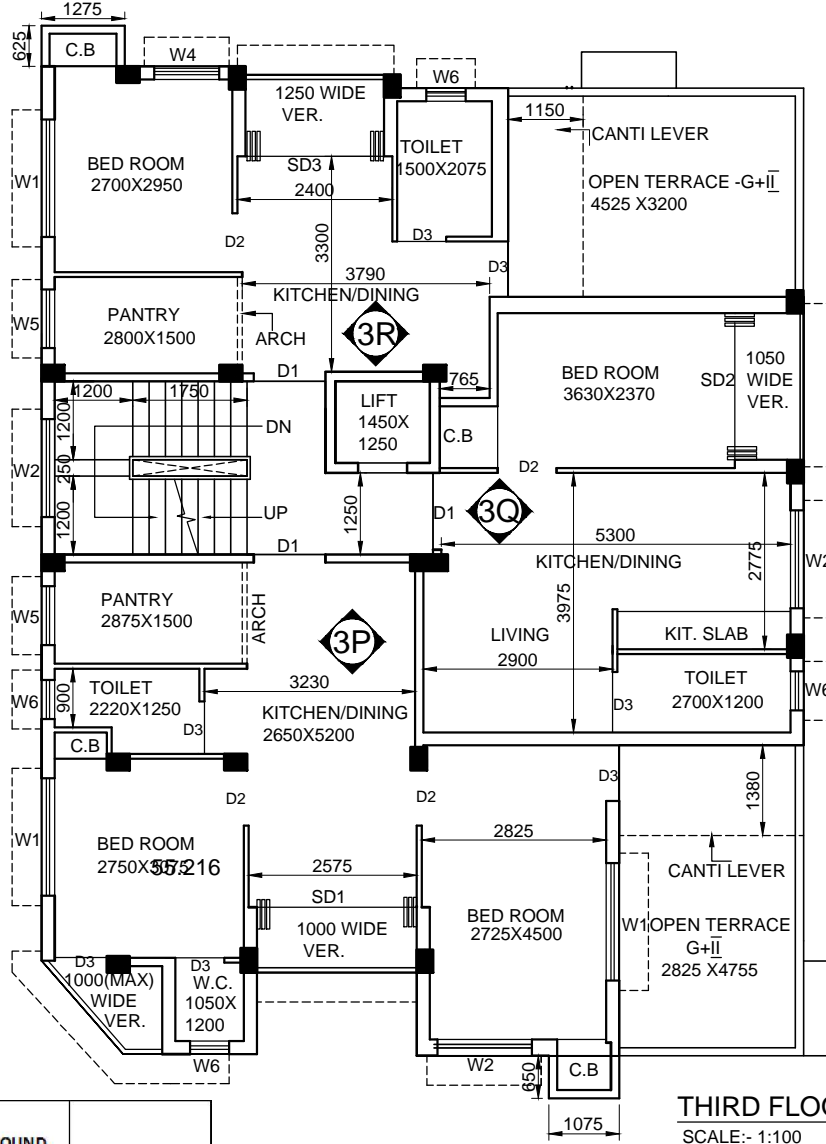


**G+III STORIED RESIDENTIAL BUILDING AT HOLDING NO - 1646,
 DHALUA MADHYA, AT MOUZA - DHALUA, R.S.
 DAG NO.-107(P) , R.S.KHATI ANNO.-188, J.LNO.-43,
 WARD NO.-02, P.S.-SONARPUR, DIST.-SOUTH 24 PARGANAS,
 UNDER- RAJPUR SONARPUR MUNICIPALITY.**



THIRD FLOOR PLAN
 SCALE:- 1:100

| GROUND FLOOR STAIR, LIFT & LIFT LOBBY AREA (SQM.) | GROUND FLOOR SERVICE AREA (SQM.) | TOTAL (SQM.) |
|---|----------------------------------|--------------|
| 16.656 | 6.908 | 23.564 |

| FLAT NAME | RERA CARPET AREA (SQM.) | NET FLAT AREA (EXCLUDING PROPORTIONATE COMMON AREA) (SQM.) | PROPORTIONATE COMMON AREA (TYP.FL.) EXCLUDING LIFT & STAIR WELL (SQM.) | GROUND FLOOR COMMON AREA (SQM.) | BUILT-UP AREA (SQM.) | 50% OPEN TERRACE AREA (SQM.) | BUILT-UP AREA INCLUDING O.T. (SQM.) | SUPER BUILT-UP AREA (ADD25%) (SQM.) | SUPER BUILT-UP AREA (SQFT.) |
|-----------|-------------------------|--|--|---------------------------------|----------------------|------------------------------|-------------------------------------|-------------------------------------|-----------------------------|
| FLAT 3P | 45.441 SQM./ 489 SQFT. | 55.915 | 5.137 | 2.971 | 64.023 | 6.717 | 70.740 | 88.424 | 952 |
| FLAT 3Q | 31.834 SQM./ 343 SQFT. | 37.830 | 3.476 | 2.010 | 43.316 | 0.000 | 43.316 | 54.145 | 583 |
| FLAT 3R | 27.124 SQM./ 292 SQFT. | 34.505 | 3.17 | 1.834 | 39.509 | 7.240 | 46.749 | 58.436 | 629 |